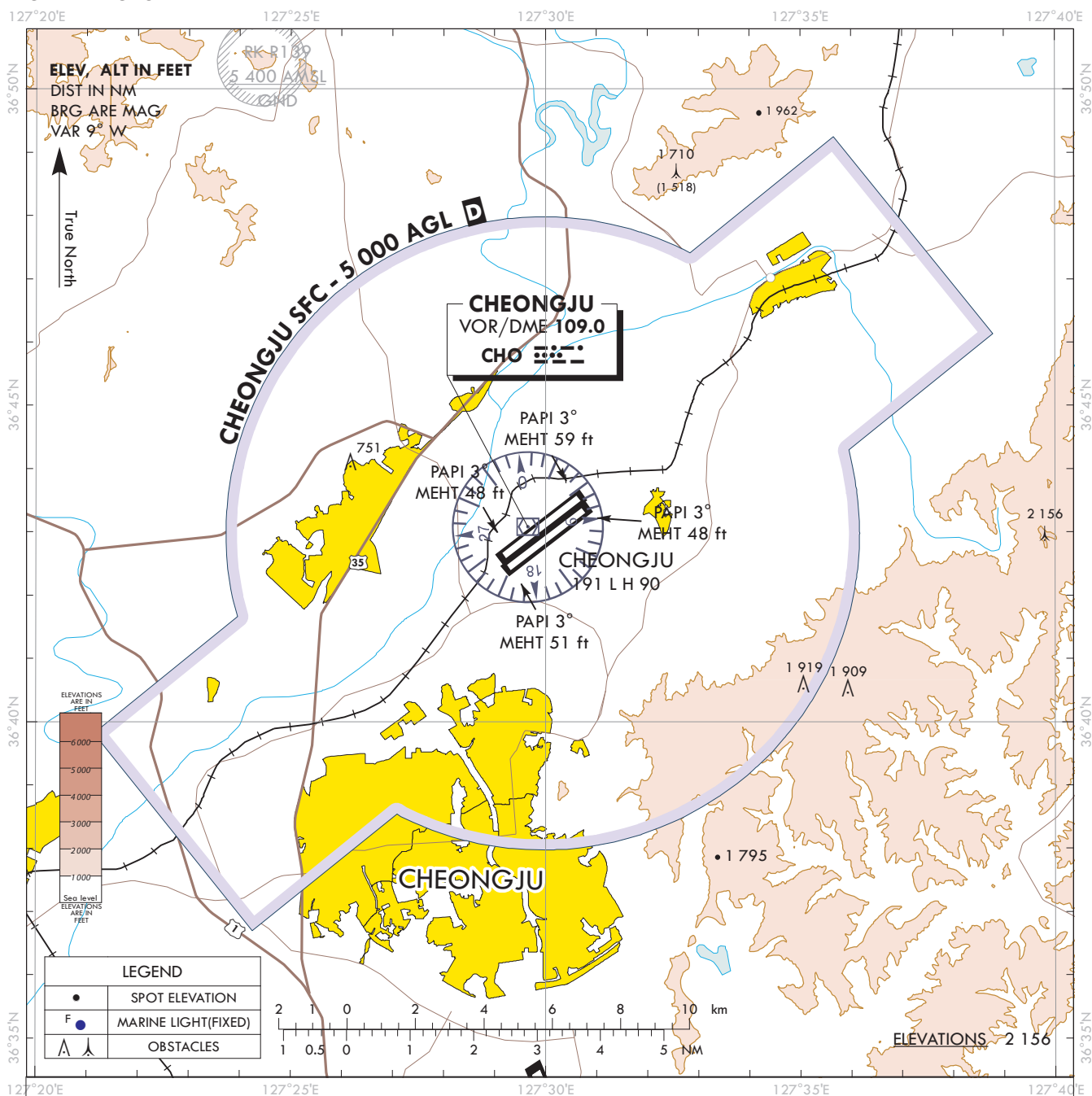


**VISUAL  
APPROACH  
CHART - ICAO**

AD ELEV 192 ft  
HEIGHTS RELATED  
TO AD ELEV

JUNGWON	APP	134.0
	DEP	129.65
CHEONGJU	TWR	118.7 126.2

**CHEONGJU/Cheongju**



**ATS Airspace Classifications**

**1. Class D : Radius of Cheongju airports**

**\* Vertical Limits**

- Within 5 NM including areas which are extended southwest-bound from

364140N 1272357E - 363949N 1272108E -

363642N 1272415E - 363833N 1272705E

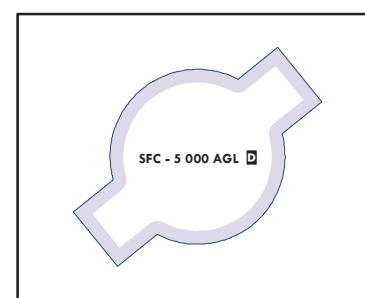
and northeast-bound from

364725N 1273250E - 364915N 1273539E -

364608N 1273847E - 364418N 1273557E (SFC-5 000 ft)

**\* Speed Limits : 250 kts IAS or less below 10 000 ft AMSL**

200 kts IAS or less at or below 2 500 ft AMSL within 4 NM of the airport.



Change : Information of vertical limits for class D airspace.